



GAT MONTHLY MEMBERSHIP PROGRESS REPORT

Results as of: 1/31/2022

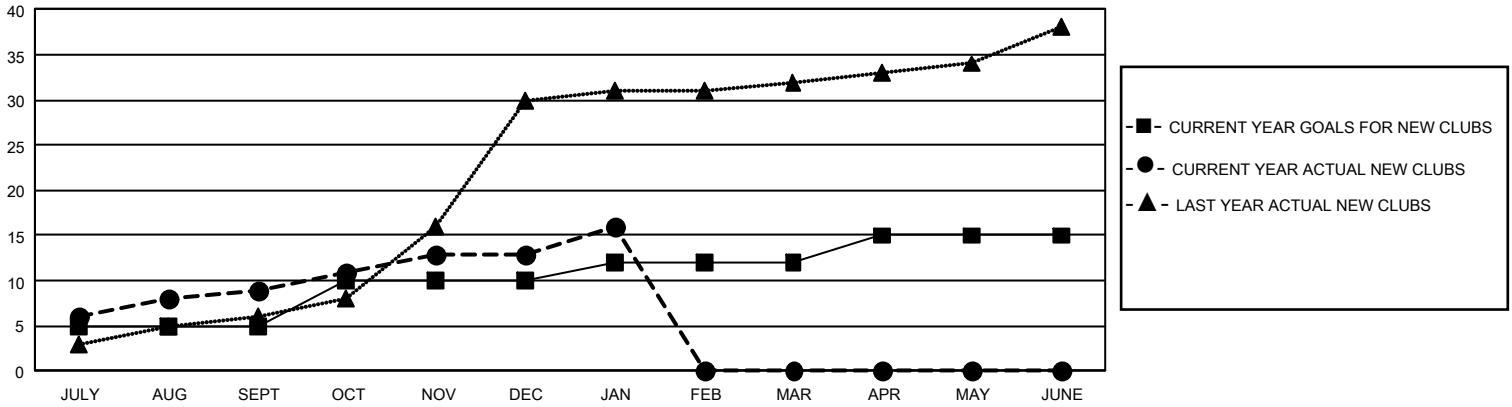
GMT Constitutional Area 6, Group L

REPORT DOES NOT INCLUDE CLUBS IN UNDISTRICTED AREAS.

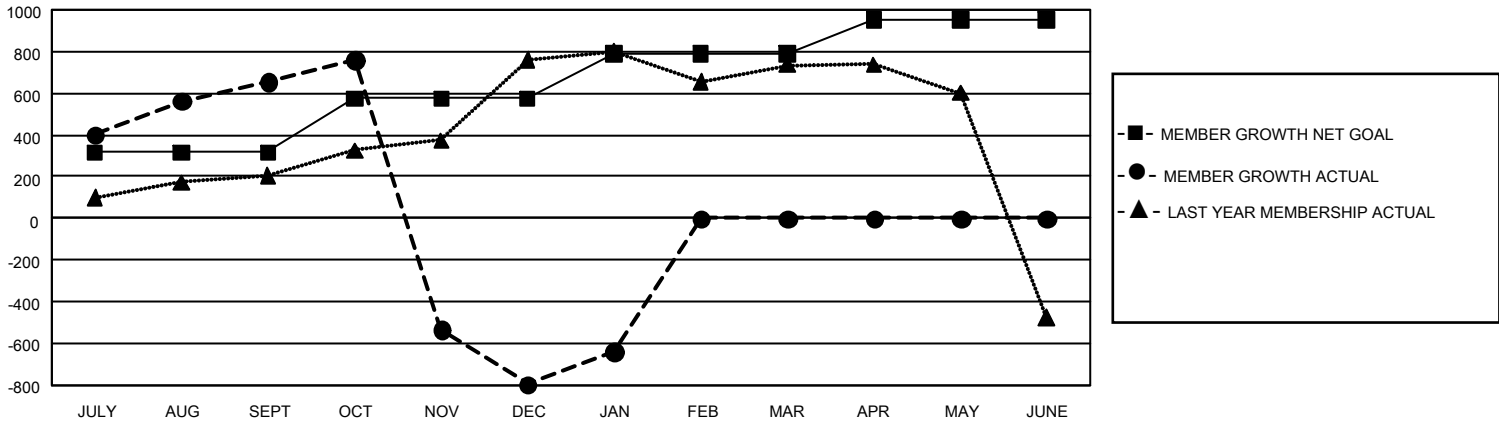
| Clubs | | | |
|-----------------------|---------------|-----------|---------------|
| RESULTS FOR 2021-2022 | | | |
| QUARTER | NEW CLUB GOAL | NEW CLUBS | DROPPED CLUBS |
| JULY/AUG/SEPT | 15 | 9 | 4 |
| OCT/NOV/DEC | 15 | 4 | 2 |
| JAN/FEB/MAR | 6 | 3 | 0 |
| APR/MAY/JUNE | 9 | 0 | 0 |

| Members | | | |
|-----------------------|------------------------|----------------------|--|
| RESULTS FOR 2021-2022 | | | |
| QUARTER | MEMBER GROWTH NET GOAL | MEMBER GROWTH ACTUAL | DROPPED MEMBERS ACTUAL (including transfers) |
| JULY/AUG/SEPT | 315 | 905 | 181 |
| OCT/NOV/DEC | 260 | 318 | 1,750 |
| JAN/FEB/MAR | 215 | 210 | 37 |
| APR/MAY/JUNE | 160 | 0 | 0 |

GOALS AND ACTUAL NEW CLUBS CUMULATIVE



GOALS AND ACTUAL MEMBERS CUMULATIVE



| | | | |
|-------------------------|---|---------------------------------------|--------------------------------|
| DROPPED CLUBS: 6 | 155 CLUBS OF 318 ADDED 1 OR MORE NEW MEMBERS | GENDER DISTRIBUTION | |
| | | MALE 6,620 (60.69%) | FEMALE 4,287 (39.31%) |
| DROPPED MEMBERS | | NON BINARY 0 (0.00%) | PREFER NOT TO ANSWER 0 (0.00%) |
| DECEASED 30 | CLICK HERE FOR CUMULATIVE MEMBERSHIP DATA | TOTAL FAMILY UNIT MEMBERS 6,305 | |
| CLUB CANCELLED 1,368 | | FAMILY MEMBERS PAYING HALF DUES 3,429 | |
| OTHER 570 | | | |
| TOTAL 1,968 | | | |